

# Evoke The Mystique Of The Far East

Dominated by practical simplicity and religion, the oriental inspired design of this home accentuates elegance of its own



A preference for travelling to far-flung countries, discovering cultures and appreciating art has resulted in a diverse, eclectic interior design style. The Oriental cultural design of this home is typically dominated by practical simplicity and religion with wooden home accents that figure prominently within it. Wooden carvings of elephants and a cascading water feature stand tall at the entrance of this home to graciously extend a warm welcome to visitors, while Chinese furniture pieces such as chairs and tables are placed effortlessly in the living room to add beauty to the whole structure. Exemplified by gorgeous sculptures, furniture, wood wall art and un-plastered wall finishing, the interior of this home has evolved into a simple part of daily life to a beautiful creation.

Of majestic awe are the high-resistant glass walls that give a glimpse of the external areas of the home.

Tastefully decorated with kitchen cabinets, dining table, raised counters and bar stools, the kitchen, a combination of regal elegance of black and white, paints a complete picture of pure elegance.

Incorporating functionality, spaciousness and modernity, the walls to the bedrooms are painted in clear white, harmonizing perfectly with other wooden furniture's laid gracefully on the polished wooden floor finishing.

In the open is a wooden hut in teak set amongst the back draft of natural limestone and plants for sheer serenity. Reaping the full benefits of a corner lot home, the landscape areas are well spread out in a Balinese setting. This home is a sure haven for a peaceful rendezvous after a long day at work.

本案设计把度假风味融入居家中。庭院的设计尤其体现出该风味，设计师将绿色植物、潺潺流水的鱼池、木板桥、亚答亭子等等，另外以艺术雕像与挂画作点缀，无一不是导入巴厘岛的自然理念。

设计师特别选用两尊含有巴厘风味的雕像、小水池置放于入门玄关处，尚未步入室内，浓厚的度假情调就显现于此。

客厅内，一张藤制椅、木质茶几、原砖砌成的电视主墙，营造出一个宁静、不夸张却蕴涵禅意的氛围。仔细一看，电视主墙原来内有乾坤，即可将电线藏入砖块空隙之间，让电线不会暴露在外；少了繁杂电线阻碍视线，空间达到整齐美观。

客厅乃至厨房并没有窗帘或布帘遮阳，目的是要让全室空间在阳光照射下获得最舒服干爽的自然光线。主浴内，继续沿用通透的设计元素，采光充裕、玻璃隔间、横木条假天花是承袭自然素雅格调的最好典范。

移步二楼偏厅，电视主墙采用相同元素，木地板与绒毛米色地毯予人回归自然之感，同时呼应着室外，顿时能把一天劳累荡涤干净，使屋主继续陶醉于这自然风光的“度假屋”里。|||







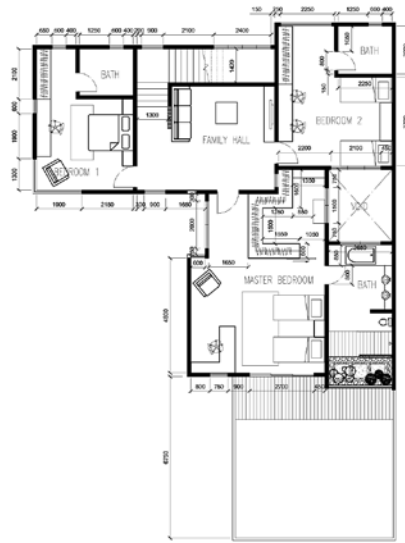
The living and the dining room exudes simple elegance yet allows ample working space. A great advantage of the glass curtain wall is that natural light is allowed to penetrate deeper within the building.







GROUND FLOOR



FIRST FLOOR








---

**ONE STOP INTERIOR & DISPLAY SDN BHD**

---

TEL  
+603-7722 5463

FAX  
+603-7722 5464

EMAIL  
neo@1stopinterior.com

WEBSITE  
www.1stopinterior.com

---

PROJECT NAME  
THE RIDGE WOOD @ DESA PARK CITY  
INTERIOR DESIGNER  
FRANKIE CHIN  
DEVELOPER  
DESA PARK CITY  
BUILD & RENOVATION WORKS  
ONE STOP INTERIOR & DISPLAY S/B

CEILING  
PLASTERBOARD CEILING  
WALL FEATURES  
NIPPON SNOW WHITIE &  
CRETE BARREL  
FLOORING  
MARBLE-IBRI CREAM LAMINATED  
FLOORING- NATURAL BEECH  
LIGHTING  
AR111 DOWN LIGHT  
FURNITURE  
WOODEN ANTIQUE STYLE  
INSTALLATION  
GREY-OLD USED BRICK  
HOME ACCESSORIES  
BALINESE OIL PAINTING  
KITCHEN CABINETRY  
CUSTOM MADE-SPRAY PAINT GLASS  
FINISHING WITH WHITE GEMINI  
SOLID SURFACE  
LANDSCAPING  
ONE STOP INTERIOR & DISPLAY S/B  
PHOTOGRAPHY BY  
GAVIN YAM

---